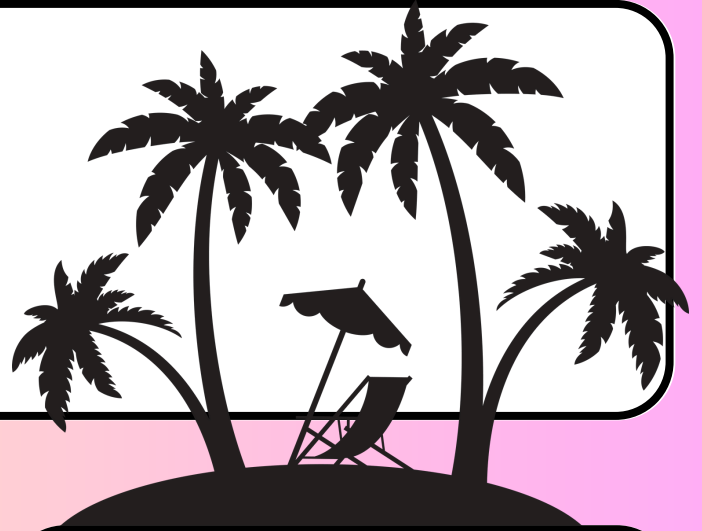


# PARTNER PRESS

JUNE 2025



## SUMMER HOURS

Summer Hours for pick-ups and deliveries will be 7:30 AM to 2:00 PM ending Friday, August 29th

## RECERT. RECOMMENDATIONS

- Hand out flyers on the distribution before recertification so that the clients will have the required documents.
- Consider having a recertification day to complete applications prior to your actual distribution date.
- Prior to the distribution, host an in person training with the volunteers to instruct them how to complete an application and check verification items.
- Consider recruiting 3 to 4 volunteers to assist with applications.

## CLOSED

THUR, JUNE 19TH IN  
OBSERVANCE OF JUNETEENTH

## NO PICK-UP

WED, JUNE 18TH 8AM-1PM

## NO PICK-UP OR DELIVERY

MON, JUNE 30TH- INVENTORY

## FOOD FOR THOUGHT

- To maintain best practices for fresh and frozen items during distributions in summer temperatures, bring out the items in small increments. Once the items thaw, they must be distributed as they cannot be refrozen.
- When picking up orders, remember to transport products directly to your pantry. Use freezer blankets to maintain temperature during transport.